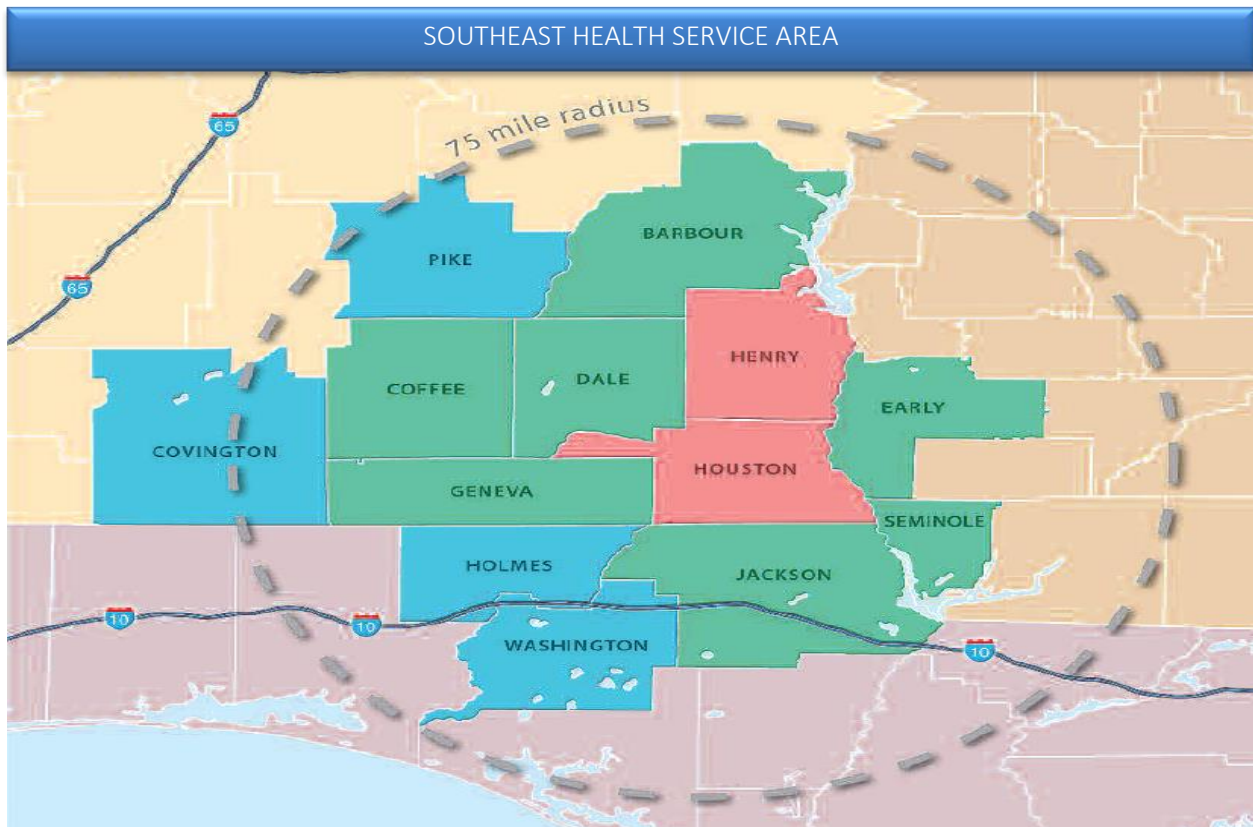


2020
SOUTHEAST HEALTH
COMMUNITY HEALTH NEEDS
ASSESSMENT



Service Area Demographic Analysis

The community served by Southeast Health is comprised of 13 contiguous counties in southeast Alabama, southwest Georgia, and the Florida Panhandle. The defined service area can be largely encompassed by a 75 mile radius around the Southeast Health campus. Demographics information is provided for the counties within the primary, secondary, and tertiary service areas which are illustrated in the map.



Note: Within the demographics section of this study, Alabama was used as the benchmark state. More than 80 percent of Southeast Health's inpatient discharges originate from Alabama counties.

Legend	
Pink	Primary Service Area (PSA)
Green	Secondary Service Area (SSA)
Blue	Tertiary Service Area (TSA)

Population

Southeast Health Service Area Population	
2018	455100
2014	458757
2010	458265

Sources: United States Census Bureau: Quick Facts/Population Estimate 2018, 2014, 2010

Southeast Health’s defined service area has a population of 455,100. Over the last 4 year period between 2014 and 2018, the population decreased 2.43 percent. Houston, Coffee, and Pike counties were expected to grow, while all other counties are projected to decline in overall population. Coffee County had the largest growth at 3.9 percent while Barbour County had the largest decline at 9.4 percent. The State of Alabama is estimated to grow at a rate of 2.3 percent during the same time period.

Southeast Health Service Area-Population by County		
County	2018 Population	Percentage of Growth/Decline
Houston	104722	3.10%
Henry	17209	-0.50%
Barbour	24881	-9.40%
Coffee	51909	3.90%
Covington	36986	-2.10%
Dale	48956	-2.60%
Geneva	26314	-1.80%
Pike	32899	1.30%
Early, GA	10247	-6.90%
Seminole, GA	8315	-4.70%
Holmes, FL	19477	-2.20%
Jackson, FL	48305	-2.90%
Washington, FL	24880	-0.10%

Source: United States Census Bureau: Quick/Facts Population Estimate 2018

Age Distribution

Between 2014 and 2018, 19 percent of the population in the Southeast Health servicing area was over the age of 65 which is an increased by 2 percent since 2014. Georgia's population 65 and older was 21.05 percent while Alabama and Georgia fell behind 2 to 3 percent. The greatest age distribution range for the Southeast Health service area is 18-64, which is almost 60 percent of the population for the area.

Southeast Health Service Area-Age Distribution				
Age Distribution	Service Area %	% of Alabama Total	% of Georgia Total	% of Florida Total
0-5 years	5.66%	5.79%	5.85%	5.20%
Under 18	21.30%	21.75%	22.95%	19.57%
Age 19-64	58.72%	59.48%	56.00%	58.53%
65 older	19.17%	18.78%	21.05%	18.97%

Sources: United States Census Bureau: Quick Facts/Age Estimate 2018

Southeast Health Service Area-Age Distribution				
County	0-5 years	Under 18	Age 19-64	65 older
Houston	6.10%	23.00%	59.20%	17.80%
Henry	5.30%	20.60%	56.70%	22.70%
Barbour	5.20%	20.90%	59.70%	19.40%
Coffee	6.20%	23.70%	59.30%	17.00%
Covington	6.00%	21.90%	57%	21.10%
Dale	6.70%	23.00%	60.10%	16.90%
Geneva	5.40%	21.90%	57.80%	20.30%
Pike	5.40%	19.00%	66.00%	15.00%
Early, GA	6.40%	25.10%	55.90%	19.00%
Seminole, GA	5.30%	20.80%	56.10%	23.10%
Holmes, FL	5.50%	20.20%	51.10%	19.90%
Jackson, FL	5.00%	18.60%	61.90%	19.50%
Washington, FL	5.10%	19.90%	62.60%	17.50%

Sources: United States Census Bureau: Quick Facts/Age Estimate 2018

Race Distribution

The racial distribution of the community served by Southeast Health is similar to that of the State of Alabama. Houston County, Alabama, our largest populated county, is 70 percent white and 30 percent black which is almost identical to the State of Alabama. Holmes County, Florida has the largest white race percentage in the service area while Early County, Georgia has the least. Early County, Georgia is almost equal in the number of white and black racial distribution. They also have the largest black population in the service area. Coffee County, Alabama has the largest Hispanic population at 7.60 percent. All other race categories have a < 10 percent racial distribution.

Southeast Health Service Area-Race Distribution						
County	White	Black	Indian	Asian	Hispanic	Two or more
Houston	69.10%	27.20%	0.50%	1.10%	3.40%	2.00%
Henry	71.40%	26.30%	0.50%	0.40%	2.70%	1.50%
Barbour	49.10%	48.40%	0.70%	0.50%	4.30%	1.20%
Coffee	75.80%	17.70%	1.40%	1.60%	7.60%	3.00%
Covington	84.50%	12.60%	0.70%	0.50%	1.70%	1.70%
Dale	73.80%	21.00%	0.80%	1.40%	6.60%	2.80%
Geneva	87.20%	9.50%	1.00%	0.30%	4.00%	1.90%
Pike	57.50%	37.70%	0.70%	2.10%	2.40%	1.90%
Early, GA	46.30%	51.40%	0.60%	0.70%	2.30%	0.90%
Seminole, GA	64.50%	32.90%	0.30%	0.80%	3.50%	1.50%
Holmes, FL	89.00%	6.70%	1.00%	0.70%	3.00%	2.40%
Jackson, FL	69.20%	26.90%	0.90%	0.80%	5.00%	2.00%
Washington, FL	80.40%	14.90%	1.40%	0.60%	3.70%	2.40%

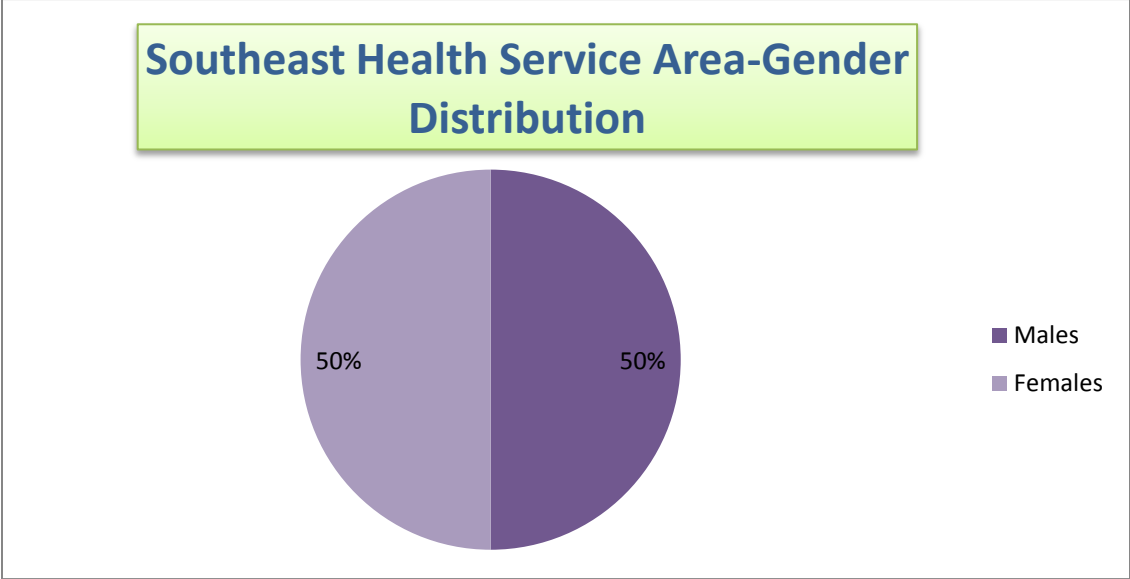
Sources: United States Census Bureau: Quick Facts/Race Estimate 2018

Southeast Health Service Area-Race Distribution Service Area v State						
County	White	Black	Indian	Asian	Hispanic	Two or more
Service Area	70.60%	25.63%	0.81%	0.88%	3.86%	1.94%
State of Alabama	69.10%	26.80%	0.70%	1.50%	4.40%	1.70%

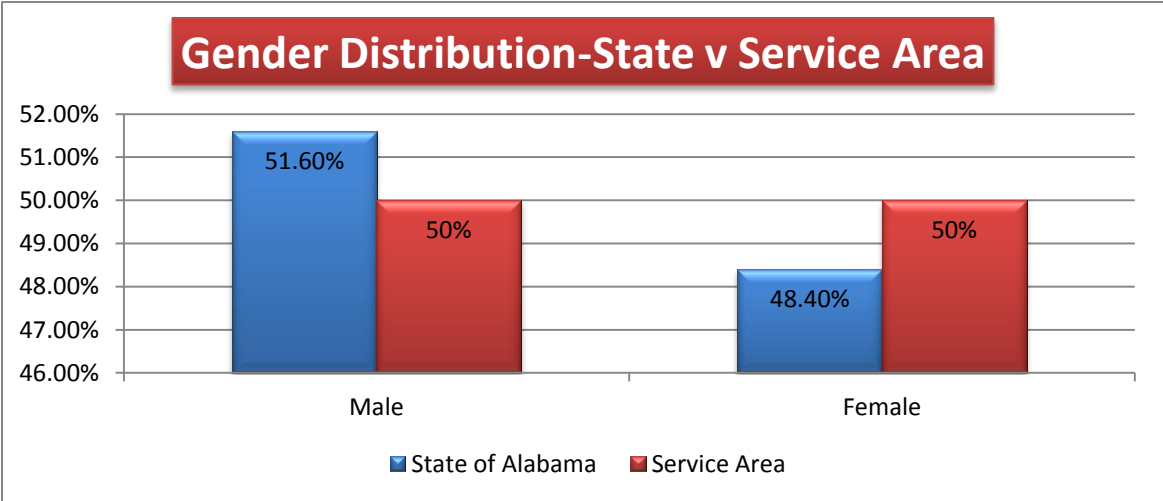
Sources: United States Census Bureau: Quick Facts/Race Estimate 2018

Gender Distribution

The gender distribution of the Southeast Health service area population is evenly distributed between males and females. The State of Alabama is comparable to the Southeast Health service area with only a 3.2 percent difference in male and female gender in the state.



Sources: United States Census Bureau: Quick Facts/Gender Estimate 2018



Sources: United States Census Bureau: Quick Facts/Gender Estimate 2018

Education Distribution

The population of adults ages 25+ in the Southeast Health defined service area with a high school degree is lower than that of the State of Alabama. This is a shift from the previous assessment in 2014. While the states have a four to eight percent advantage over county high school graduates, there has been a 20 percent increase in overall high school graduates in the Southeast Health defined service area in the past six years. The service area for Southeast Health has an 81.45 percent total average of adults 25+ with a high school degree where the state has 85.80 percent. Eight of the servicing counties are in the State of

Southeast Health Service Area by State Education Distribution			
State	< High School	HS Graduate	BS or high
Alabama	14.20%	85.80%	24.90%
Georgia	13.30%	86.70%	30.70%
Florida	12.00%	88.00%	29.20%

Alabama. Florida and Georgia make up the other five counties with a combined average of 80.98 percent of high school graduates. Coffee County is the only county that is larger than the state by 0.4 percent. The service area has only 15.66 percent of adults 25+ with Bachelor’s degree or higher while the State of Alabama has 24.90 percent, the State of Florida 29.2 percent, and the State of Georgia 30.7 percent.

Sources: United States Census Bureau: Quick Facts/Education Estimate 2018

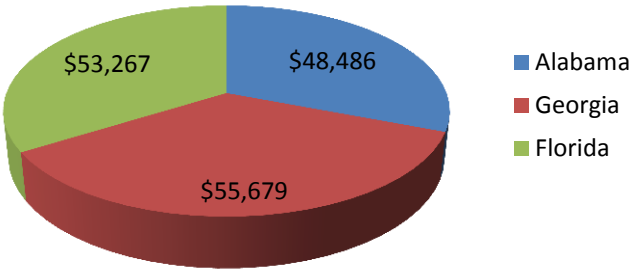
Southeast Health Service Area-Education Distribution			
County	< High School	HS Graduate	BS or high
Houston	14.30%	85.70%	18.00%
Henry	19.80%	80.20%	18.00%
Barbour	27%	73.00%	12.20%
Coffee	13.80%	86.20%	23.40%
Covington	17.10%	82.90%	14.90%
Dale	14.20%	85.80%	17.00%
Geneva	20.90%	79.10%	11.10%
Pike	19.00%	81.00%	23.60%
Early, GA	19.90%	80.10%	15.60%
Seminole, GA	14.50%	85.50%	14.40%
Holmes, FL	22.60%	77.40%	10.30%
Jackson, FL	19.30%	80.70%	13.40%
Washington, FL	18.80%	81.20%	11.70%

Sources: United States Census Bureau: Quick Facts/Gender Estimate 2018

Household Income Distribution

Southeast Health’s service area is less affluent than the State of Alabama, Georgia, and Florida as a whole. Coffee and Henry Counties are the only counties with a median income larger than their respective states. The State of Alabama is lower than the service area states.

2018 Median Household Income



Sources: United States Census Bureau: Quick Facts/Income Estimate 2018

Southeast Health Service Area- Household Income Distribution	
County	Median Household Income
Houston	45496
Henry	48610
Barbour	34186
Coffee	53155
Covington	40601
Dale	45960
Geneva	38142
Pike	34678
Early, GA	31567
Seminole, GA	34338
Holmes, FL	38608
Jackson, FL	39002
Washington, FL	37188

Sources: United States Census Bureau: Quick Facts/Income Estimate 2018

Labor Force Distribution

According to the Bureau of Labor Statistics, the seasonally adjusted unemployment rate fell over 2 percent since November 2015. Barbour County, AL and Early County, GA have the highest unemployment rate of 3.40 percent in the Southeast Health service area. Coffee and Geneva County have the lowest at 2.40 percent. The State of Georgia has the highest unemployment rate in the service area according to the US Bureau of Labor Statistics.

Southeast Health Service Area-Unemployment Rate November 2019		
State	County	Rank within State
Alabama (State average 2.7)	Houston	2.50%
	Henry	2.90%
	Barbour	3.40%
	Coffee	2.40%
	Covington	2.70%
	Dale	2.60%
	Geneva	2.40%
	Pike	2.80%
Georgia (State average 3.3)	Early, GA	3.40%
	Seminole, GA	3.10%
Florida (State average 3.1)	Holmes, FL	3.10%
	Jackson, FL	2.90%
	Washington, FL	2.80%

Source: Bureau of Labor Statistics/Local Unemployment Statistics Map 2019

County Health Rankings & Roadmaps

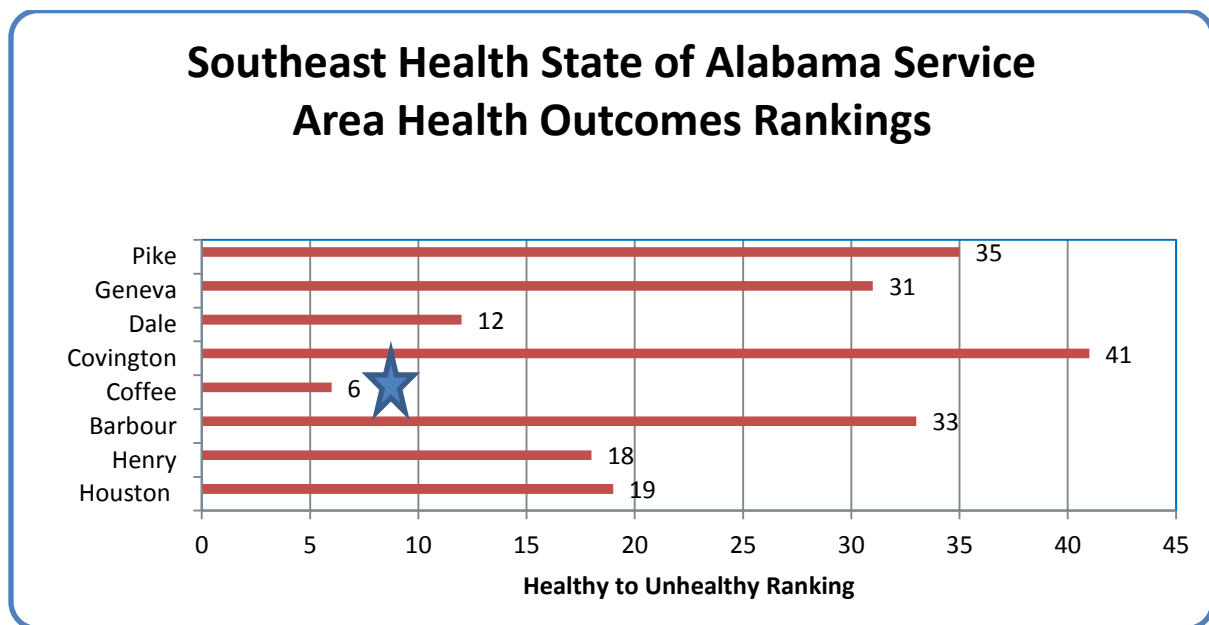
On an annual basis, the Robert Wood Johnson Foundation and the University of Wisconsin Population Health Institute measure and publish vital health factors in nearly every county in the nation. *The County Health Ranking & Roadmaps* report provides an overview of the health of each individual state and each county within the state.

Southeast Health's defined service area consists of 13 counties in a 3 state area. In the **County Health Rankings** report, a few of the measures are state specific making comparisons across state boundaries difficult. As such, comparisons should not be made comparing state to state.

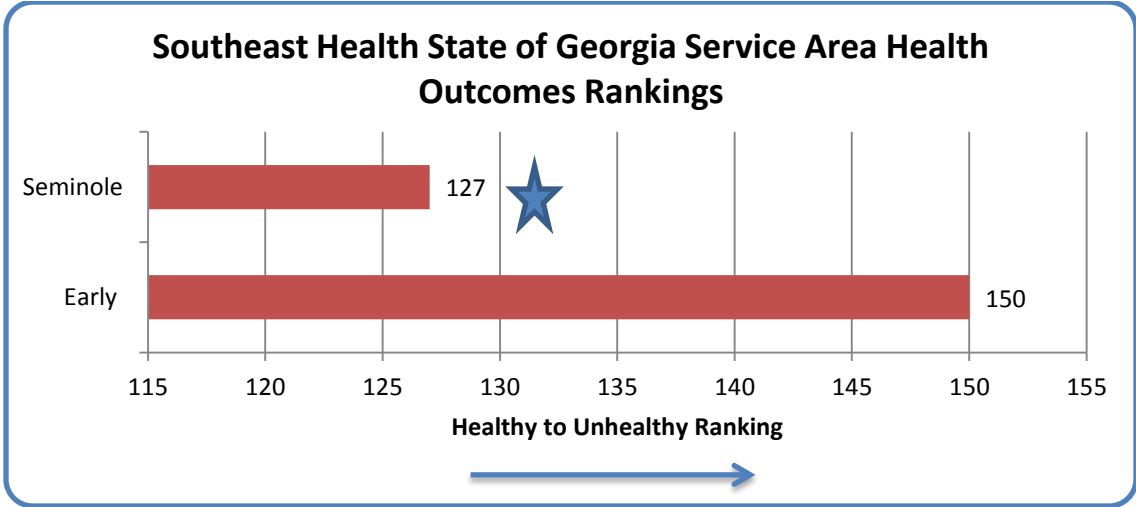
Alabama and Florida have 67 counties within each state; **County Health Rankings** rank the counties in these states on a scale of 1 to 67, with 1 being the best. Georgia has 159 counties. It is ranked on a 1 to 159 bases. The lower the ranking in health scores the better the health of the county.

Health Outcomes Rank

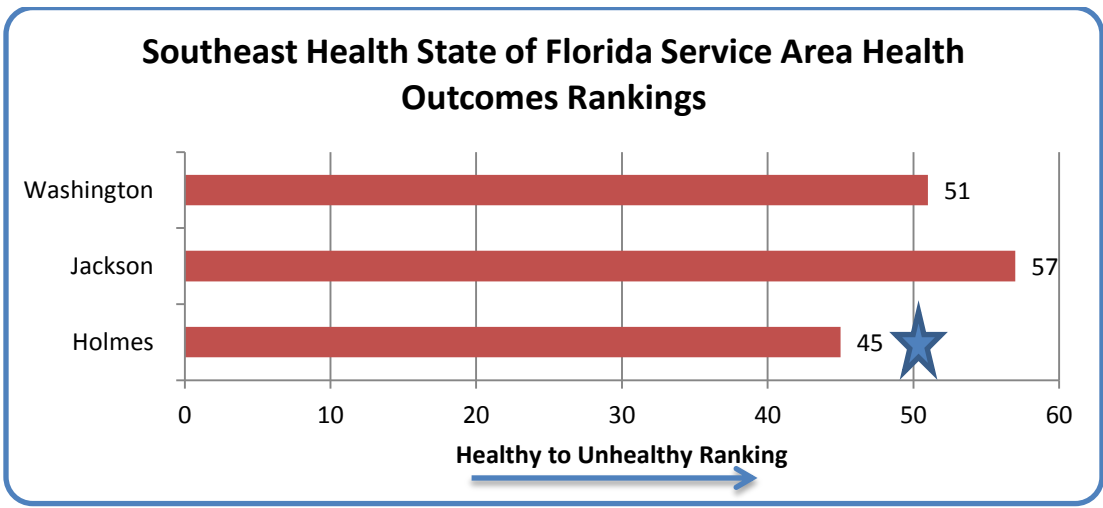
The **Health Outcomes Rank** is based on two measures: how long someone lives and the quality of life. Rankings are based from highest to lowest with the lowest ranking being the healthiest outcomes. See the table for the ranking of all 13 counties in the Southeast Health service area to see how they compare.



Source: County Health Ranking & Roadmaps, 2019



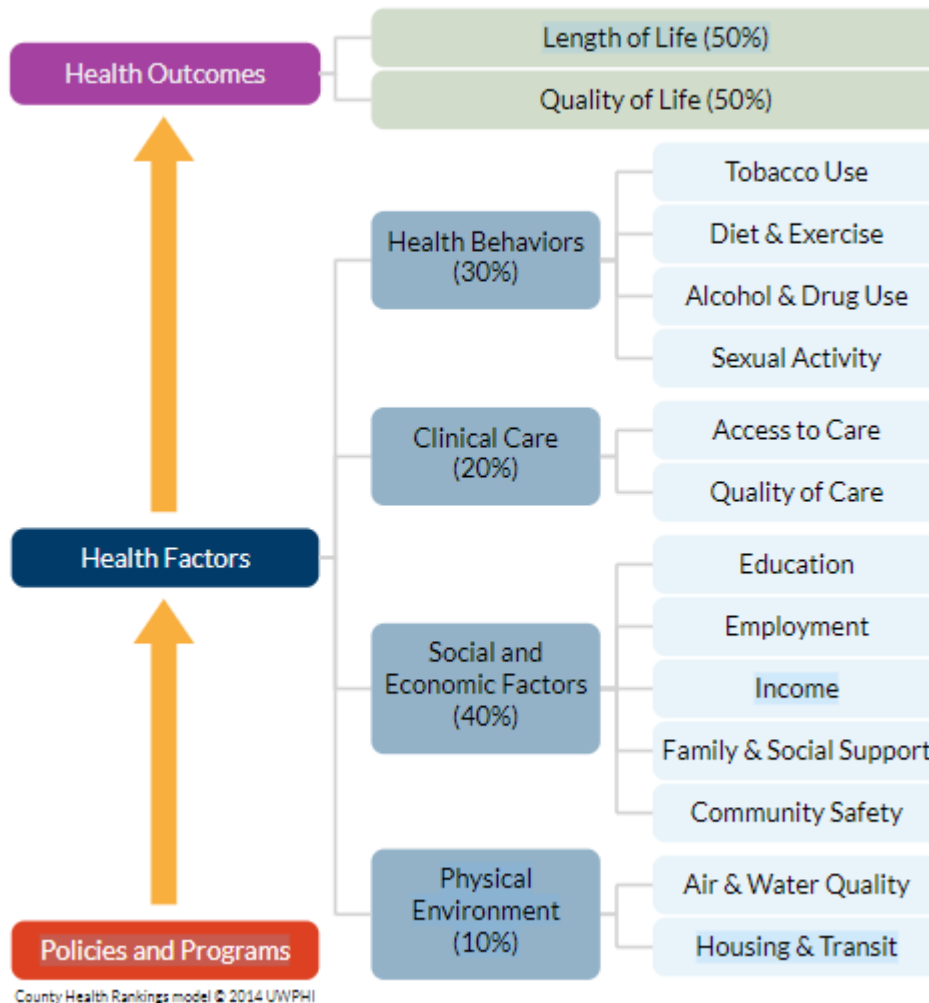
Source: County Health Ranking & Roadmaps, 2019



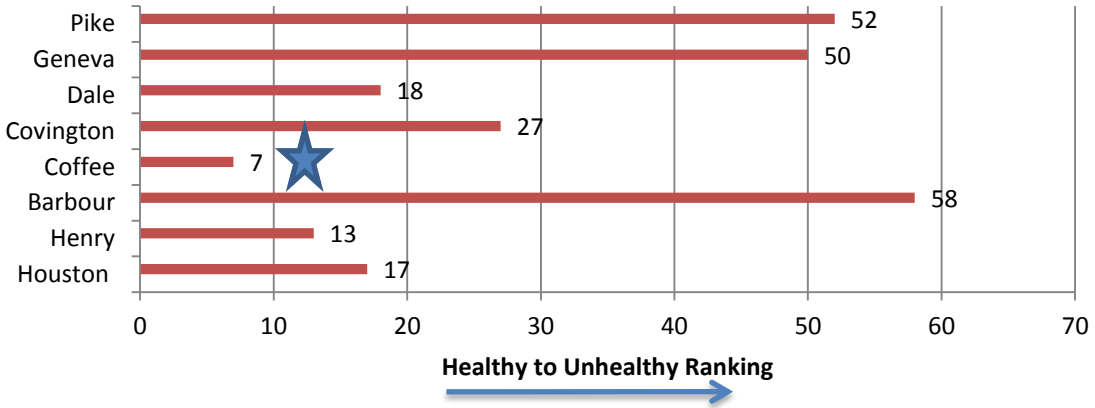
Source: County Health Ranking & Roadmaps, 2019

Health Factors Rank

The **Health Factors Rank** is based on four types of measures: health behaviors, clinical care, social and economic, and physical environmental factors. A lower ranking with the state indicates better health factors within the county. In 2019, the 13 counties within Southeast Health's service are ranked in this table in comparison to other counties within their respective state:

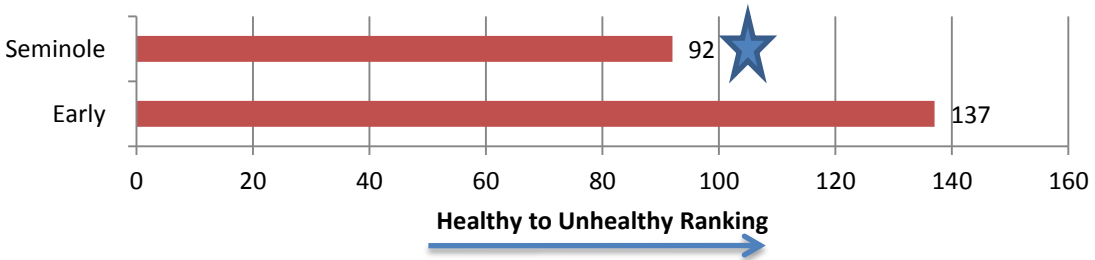


Southeast Health State of Alabama Service Area Health Factors Rankings

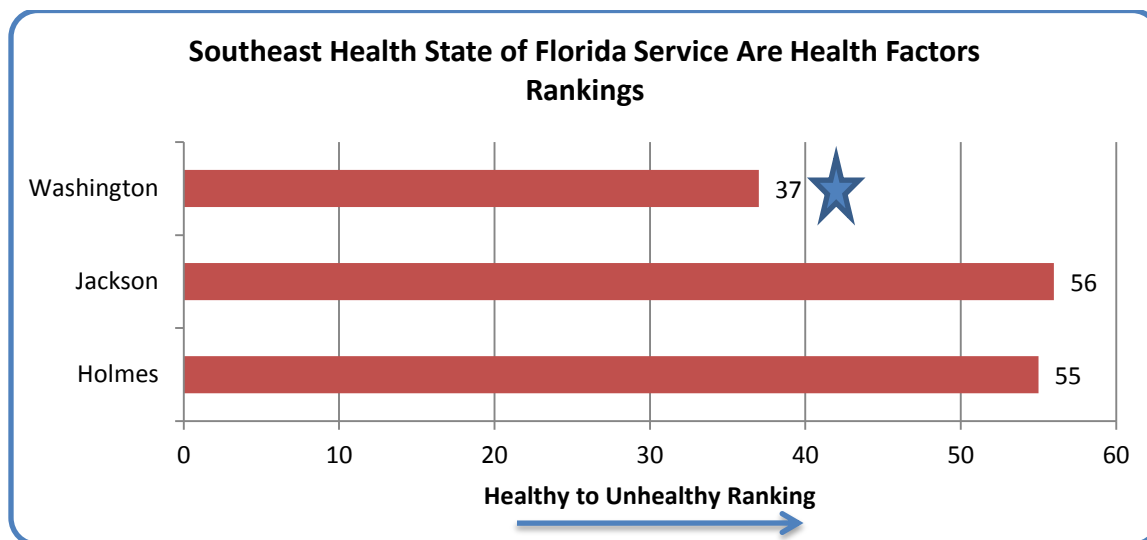


Source: County Health Ranking & Roadmaps, 2019

Southeast Health State of Georgia Service Area Health Factors Rankings



Source: County Health Ranking & Roadmaps, 2019

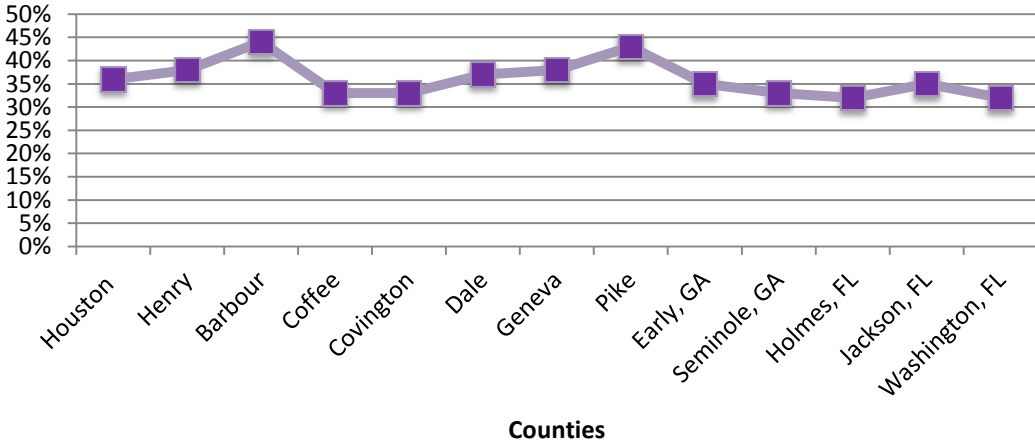


Source: County Health Ranking & Roadmaps, 2019

Obesity

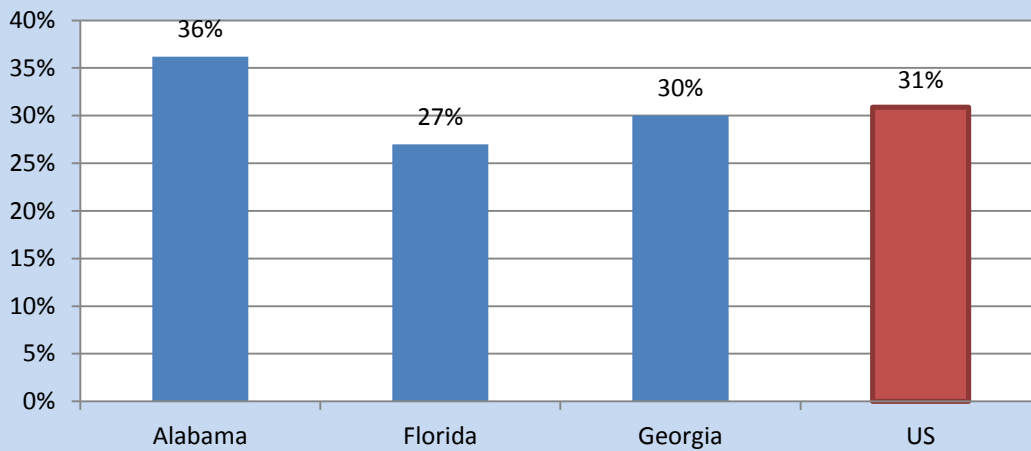
According to *County Health Ranking and Roadmaps*, obesity increases the risk for health conditions such as coronary heart disease, type 2 diabetes, cancer, hypertension, dyslipidemia, stroke, liver and gallbladder disease, sleep apnea and respiratory problems, osteoarthritis, and poor health status. Obesity is a major risk factor for 5 of the top leading causes of death in the United States. Adult obesity is the percentage of the adult population (age 20 and older) with a body mass index (BMI) greater than or equal to 30 kg/m. The Southeast Health defined service area is slightly higher 36 percent than the United States 31 percent. Barbour County has the highest percentage rate of all the service area at 44 percent. Holmes and Washington County, Florida have the lowest percentages at 32 percent which is consistent with the State of Florida who is 27 percent. A healthy diet and low BMI will reduce the risk of developing chronic diseases or early death.

2015 % of Obesity in Southeast Health Service Area



Source: County Health Ranking & Roadmaps, 2019

2015 % of Obesity State v US



Source: County Health Ranking & Roadmaps, 2019

Smoking

According to *Healthy People 2020*, tobacco use has been identified as the single most preventable cause of disease, disability and death in the United States. Each year, approximately 443,000 Americans die from tobacco related illness.

The health impact of tobacco use causes serious disease and health problems including:

- Cancers of the lung, bladder, kidney, pancreas, mouth and throat
- Heart disease
- Lung disease
- Premature birth

Additionally, second hand smoke is known to cause heart disease and lung cancer in adults and a number of health problems in children to include:

- Asthma attacks
- Respiratory infections
- Ear infection
- Sudden infant death syndrome (SIDS)

According to *Healthy People 2020*, approximately 480,000 Americans die from tobacco-related illnesses and 16 million tobacco users have at least one disease caused by the use of tobacco. In 2014, the newest fad to affect our youth is e-cigarettes. The use of flavors attracts our youth making the use of e-cigarettes larger than any other form of tobacco.

In 2016, 21 percent of adults use some form of tobacco which is more than the 16 percent use in the US. Jackson County, Florida has the largest use at 24 percent in our service area while Coffee County, AL and Seminole County, GA have the lowest.

Southeast Health is committed to providing the healthiest environment possible for patients, visitors, and employees. As we seek to promote wellness to those we serve, Southeast Health prohibits employees, visitors, and patient from smoking in any area on our campus. This includes cigarettes, electronic cigarettes, clove cigarettes, or medical marijuana.

The Southeast Health policy is supported by the City of Dothan Ordinance 2003-303, Article IV, Section 46-99(a), Smoking in Public Places, which states that

“smoking shall be prohibited in all enclosed places with the city...” The ordinance specifically includes public places under the control of any board and “waiting rooms, Hallways, wars, and semiprivate rooms of health facilities, including but not limited to hospitals, clinics, physical therapy facilities, doctors’ offices and dentists’ offices.”

Southeast Health Service Area- % of Smoking 2016	
Total Service Area	21%
Alabama Service Area	19%
Georgia Service Area	18%
Florida Service Area	15%
United States	16%

Source: County Health Ranking & Roadmaps, 2019

Excessive Drinking

According to Healthy 2020 excessive drinking has a major impact on individuals, families, and communities. The effects of substance abuse are cumulative, significantly contributing to costly social, physical, mental, and public health problems. These problems include:

- Teen pregnancy
- HIV/AIDS
- Sexually transmitted disease (STDs)
- Domestic violence
- Child abuse
- Motor vehicle crashes
- Physical fights
- Crime
- Homicide
- Suicide

The Southeast Health Service Area has a 15 percent excessive drinking average with 6 of the 13 counties at 16 percent. While is this high, the US has an excessive drinking average of 18%.

Southeast Health Service Area- % of Excessive Drinking 2016	
Houston	16%
Henry	14%
Barbour	13%
Coffee	16%
Covington	15%
Dale	14%
Geneva	15%
Pike	16%
Early, GA	12%
Seminole, GA	14%
Holmes, FL	16%
Jackson, FL	16%
Washington, FL	16%

Source: County Health Ranking & Roadmaps, 2019

Diabetes

Diabetes is a chronic disease that can affect many areas of your health and quality of life. Heart and renal disease, hypertension, and obesity are just a few health issues affected by diabetes. In the Southeast Health service area 15 percent of adults are living with diabetes that is 4 percent higher than the US average. Alabama is ranked higher than Florida and Georgia. Barbour County is ranked the highest in our service area at 18 percent.

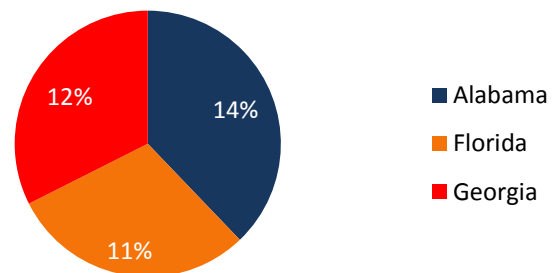
Southeast Health Service Area- % of Diabetes by County 2015	
Houston	15%
Henry	17%
Barbour	18%
Coffee	15%
Covington	15%
Dale	16%
Geneva	16%
Pike	13%
Early, GA	17%
Seminole, GA	15%
Holmes, FL	13%
Jackson, FL	16%
Washington, FL	14%

Source: County Health Ranking & Roadmaps, 2019

Southeast Health Service Area- % of Diabetes 2015	
Total Service Area	15%
Alabama Service Area	16%
Georgia Service Area	15%
Florida Service Area	14%
United States	11%

Source: County Health Ranking & Roadmaps, 2019

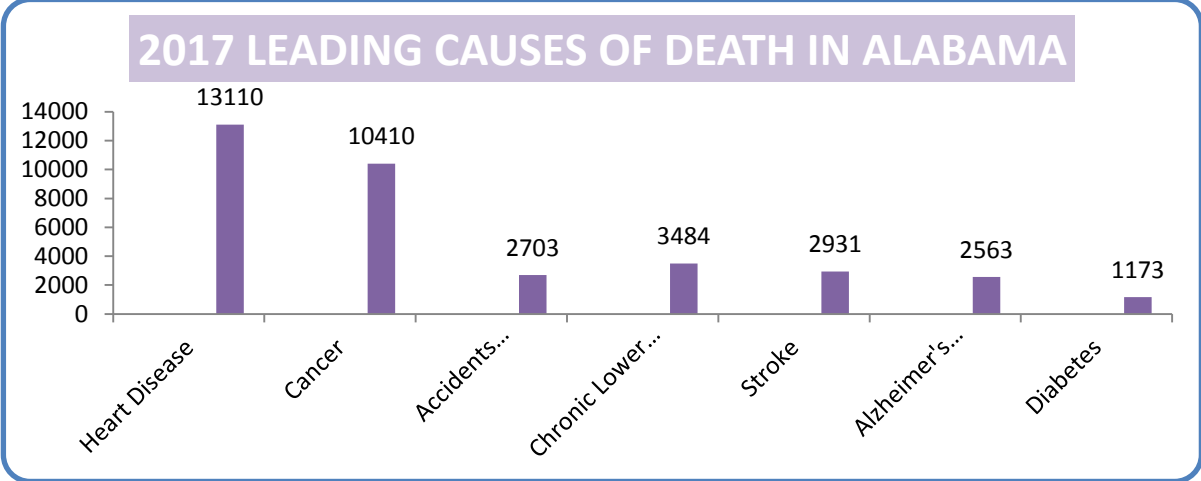
2015 Diabetes Percentages by State



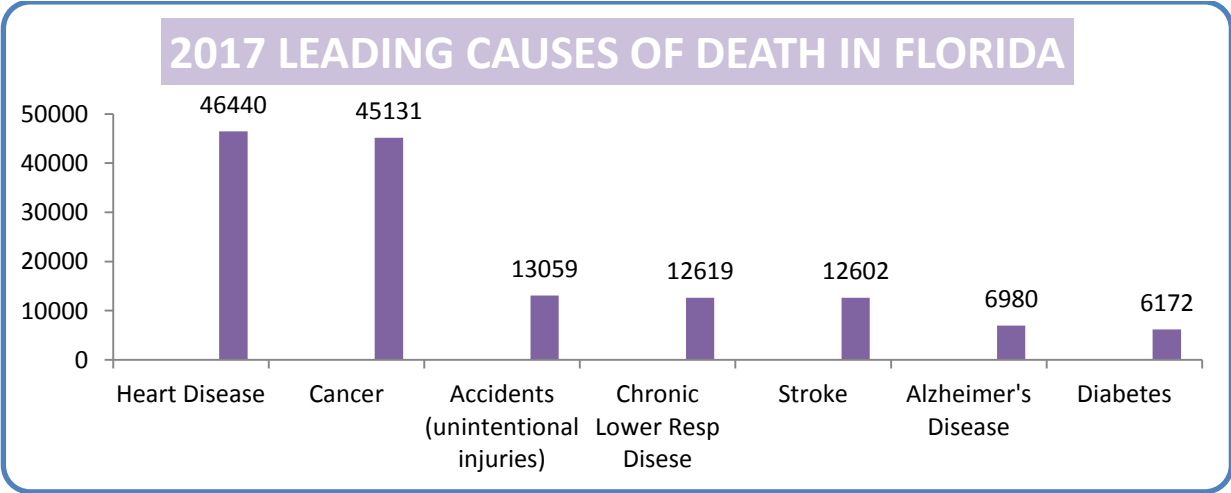
Source: County Health Ranking & Roadmaps, 2019

Health Outcomes

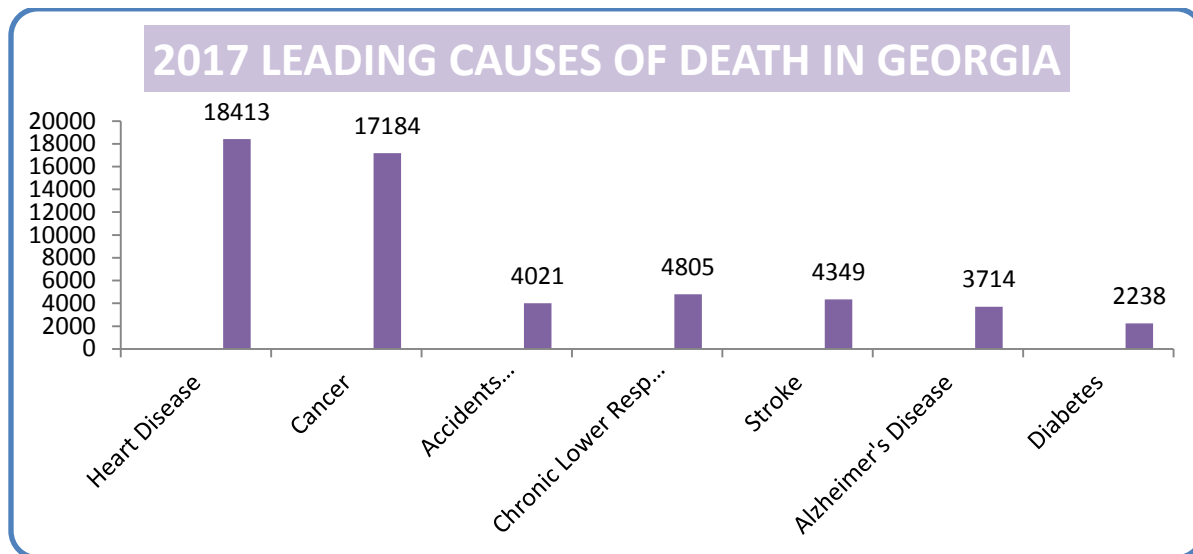
The leading cause of death in the United States is heart disease as is true for Southeast Health’s servicing area. In 2017, there were 647,457 deaths from heart disease in the US and 77,963 in our servicing area which is 12% of the US population. Other leading mortality conditions in our area are cancer, unintentional accidents, chronic respiratory disease, stroke, Alzheimer’s, and diabetes.



Source: CDC National Center For Health Statistics 2017



Source: CDC National Center For Health Statistics 2017



Source: CDC National Center For Health Statistics 2017

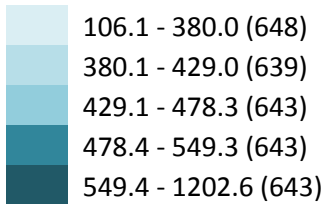
The leading cause of deaths in the US is heart disease. There has been a decrease in the number of deaths from 2015-2017. The State of Alabama had a greater decrease than the other service area states.

Deaths Due to Heart Disease per 100,000			
State	2015	2017	↑/↓
Alabama	89.7	84	-5.7
Florida	94.9	91.1	-3.8
Georgia	77.9	73.1	-4.8
National	97.2	92.9	-4.3

Source: Healthy People 2020

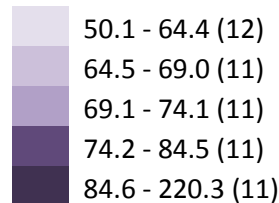
From 2014-2016 Jackson County, FL had the lowest cardiovascular death rate per 100,000 over the age of 35 in the Southeast Health service area while Holmes County, FL had the highest. Stroke is ranked 5th among leading causes of deaths in our area. Houston County, AL had the lowest stroke death rate per 100,000 over the age of 35 and Washington County, FL had the highest for our service area.

Cardiovascular Death Rate Per 100,000 over 35 2014-2016	
Houston	568.2
Henry	567.7
Barbour	552.1
Coffee	562.1
Covington	641.2
Dale	567.8
Geneva	608.1
Pike	528.9
Early, GA	563.6
Seminole, GA	553.1
Holmes, FL	625.2
Jackson, FL	515.6
Washington, FL	596.7



Source: CDC Interactive Atlas of Heart Disease and Stroke Tables

Stroke Death Rate Per 100,000 over age 35 2014-2016	
Houston	73
Henry	84.2
Barbour	103.3
Coffee	105.7
Covington	105.6
Dale	86.8
Geneva	108.5
Pike	96.4
Early, GA	92
Seminole, GA	102.8
Holmes, FL	85.9
Jackson, FL	93.1
Washington, FL	111.2



Source: CDC Interactive Atlas of Heart Disease and Stroke Tables

References

CDC Interactive Atlas of Heart Disease and Stroke Tables

<https://nccd.cdc.gov/DHDSPAtlas/Reports.aspx>

CDC National Center for Health Statistics

<https://www.cdc.gov/nchs/fastats/leading-causes-of-death.htm>

County Health Ranking & Roadmaps, 2019

<https://www.countyhealthrankings.org/app/georgia/2019/overview>

Healthy People 2020

<https://www.healthypeople.gov/2020/data/map/4582?year=2017>

United States Census Bureau: Quick Facts

<https://www.census.gov/quickfacts/fact/table/henrycountyalabama,houstoncountyalabama,AL/PST045219>

US Bureau of labor statistics Map

<https://data.bls.gov/lausmap/showMap.jsp;jsessionid=CF6C2F550FCF2F698DF6072EE0D79D65.t306v>